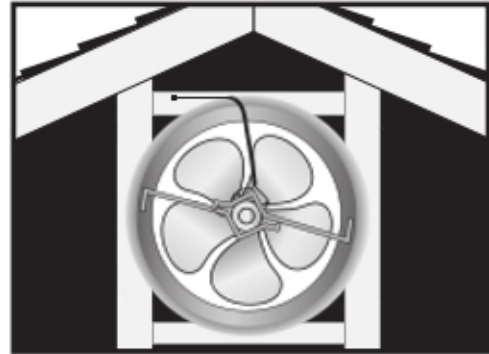


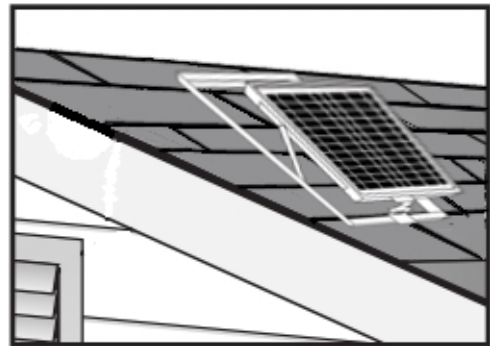


GABLE SOLAR ATTIC FAN INSTALLATION INSTRUCTIONS

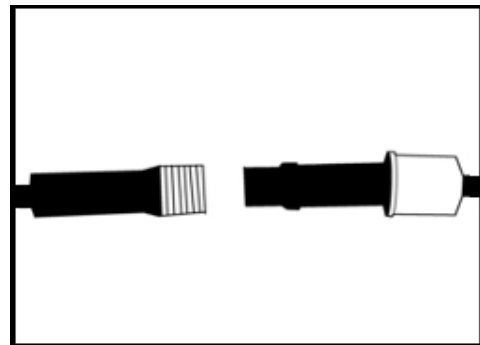
STEP 1: Mount the gable fan behind an existing louvered gable vent on the inside of the attic (the fan motor should face the attic). Block off or cover any remaining area of the vent to prevent air leakage or air recirculation.



STEP 2: Choose a location to mount the solar panel on the roof. This location should be southern facing, receive a large amount of sunlight, and be no more than 45 feet from the fan (45' power cord). Attach the solar panel frame to the roof with screws. Caulk over the screw heads to prevent leaks. Adjust the angle of the solar panel as needed.



STEP 3: Route the power cable from the fan to the solar panel through the gable vent or drill a small hole through the roof. If choosing the second option be sure to seal the hole with caulking to prevent leaks. Connect to the solar panel power cord.



NOTE: The Solar Attic Fan has been factory equipped with a thermal on/off switch designed to turn the fan:

ON: 80° F
OFF: 80° F
(+/- 1°)

You can remove the switch so that the attic fan will turn on with sunlight and off at dark.